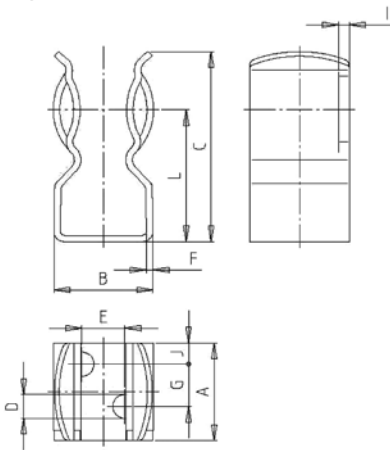


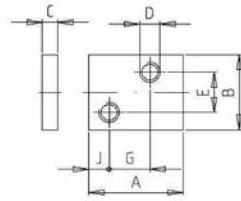
Ø 20/22

Clip für Direkt- und Leiterplattenmontage  
Clip for Direct- and PCB-mounting

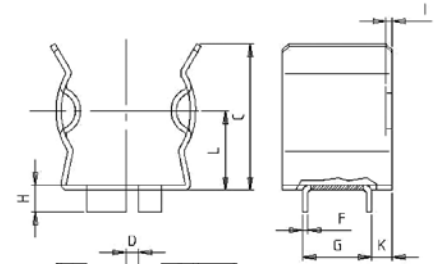
61 002 01.3



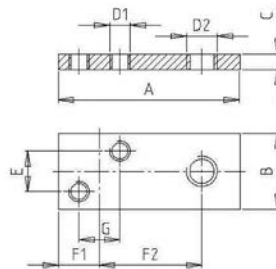
63 002 01



58 060 06



61 002 01.4



Verpackungseinheit / Packing unit:	100 Stück / 100 pieces	100 Stück / 100 pieces	100 Stück / 100 pieces	1000 Stück / 1000 pieces
IEC 60269-2	Anschraubclip Fuse-Clip Screw Mountable <b>61 002 01.3</b>	Anschraubplatte Clamping Plate <b>63 002 01</b>	Anschraublasche Terminal Link <b>61 002 01.4</b>	Einlötklip Fuse-Clip PCB Mountable <b>58 060 06</b>
IEC 60269-3	<b>20,6 x 127 mm / 22 x 58 mm</b>			
IEC 60269-4	Bemessungsleistungsaufnahme 6 W / Rated Power Acceptance 6 W			
	Kupferlegierung CuSn, vernickelt / Copper alloy CuSn, nickel-plated	Kupferlegierung CuSn, vernickelt / Copper alloy CuSn, nickel-plated	Kupferlegierung CuSn, vernickelt / Copper alloy CuSn, nickel-plated	Kupferlegierung CuSn, verzinnt / Copper alloy CuSn, tin-plated
A	18,5 mm	18,5 mm	35,5 mm	17,0 mm
B	18,4 mm	15,0 mm	15,0 mm	20,0 mm
C	36,0 mm	3,0 mm	3,0 mm	23,0 mm
D	4,5 mm	M4	-	2,0 mm
D1	-	-	M4	-
D2	-	-	M6	-
E	8,0 mm	8,0 mm	8,0 mm	-
E1	-	-	-	6,0 mm
E2	-	-	-	3,5 mm
F	1,2 mm	-	-	0,8 mm
F1	-	-	7,5 mm	-
F2	-	-	8,0 mm	-
G	8,0 mm	8,0 mm	8,0 mm	10,7 mm
H	-	-	-	4,2 mm
I	2,0 mm	-	-	1,0 mm
J	4,0 mm	4,0 mm	-	-
K	-	-	-	3,5 mm
L	25,0 mm	-	-	12,5 mm
Gewicht/Weight kg/1	0,020	0,010	0,012	0,008